



TIMELESS

A collection of classic fabrics
with a timeless appeal

SUNBRELLA®

A BRAND THAT CARES ABOUT THE ENVIRONMENT

From production to use, Sunbrella® fabrics combine quality with durability to reduce their impact on the environment.



PRODUCT LIFECYCLE MANAGEMENT

As part of its Sunbrella ReCycled offer, Sunbrella created the Endless Stories collection containing up to 50% recycled solution-dyed acrylic fibres. Our recycled fibres are sourced directly from production plants where waste is divided into colour groups and turned back into fibres. These fibres are then blended with the "virgin" Sunbrella fibres.



LESS WASTE

Our quality Sunbrella fabrics do not rot or fade and are highly resistant over time. As our fabrics do not need to be replaced as often as traditional fabrics, they generate less waste.



LOW WATER CONSUMPTION

In the solution-dyeing process, colour pigments are added to the core of the fibre, to guarantee colourfastness and save water. Throughout our manufacturing process, we take steps to reduce the amount of water we use, notably by recycling washing water through the installation of water treatment plants.



ZERO LANDFILL

For over 30 years, Sunbrella has recycled its industrial waste such as yarn and packaging. Today, every Sunbrella manufacturing facility around the globe sends absolutely no waste to the landfill.



5 YEAR WARRANTY

Sunbrella acrylic fabrics carry a 5-year limited warranty for indoor and outdoor applications against abrasion, pilling, loss of colour and strength in normal usage and exposure conditions. See general warranty conditions at : sunbrella.eu/warranty



PFAS FREE

Our company has invested significant resources to find alternatives to PFAS (perfluoroalkylate) chemicals and has developed an optimal non-PFAS finish for all Sunbrella upholstery fabrics. Our fabrics will retain their water repellency, durability, bright colours, appearance, softness, texture, ease of cleaning and strength.



REACH REGULATION

Sunbrella has developed treatments designed and applied in strict compliance with European REACH regulations.

REACH is a European regulation designed to improve the protection of human health and the environment from the risks posed by chemicals, while enhancing the competitiveness of the EU chemicals industry.



GREENGUARD CERTIFIED

Sunbrella upholstery fabric has achieved GREENGUARD GOLD Certification. Sunbrella upholstery fabrics are certified by GREENGUARD as contributing to healthy indoor air by being a very low emitting interior product.



OEKO-TEX LABEL

A quality that meets human-ecological requirements. Awarded with the OEKO-TEX label (class II - products with direct contact to the skin), Sunbrella fabrics are produced without hazardous substances and do not pose a threat to health, the skin or the environment.

TIMELESS

Designed with lasting strength and cleanability built in

Timeless is a collection of 94 fabrics. Expertly crafted, this broad palette of colours is suitable for all projects. The fabrics can stand on their own, but are also designed to serve as the basis for more trendy compositions. They are perfect for patterned or textured combinations. Indispensable essentials that stand the test of time.



EASY TO CLEAN



WATER & STAIN RESISTANT



UV/FADE RESISTANT



MOLD/MILDEW RESISTANT



BLEACH CLEANABLE



BREATHABLE COMFORT

| | STANDARDS | CLIFF | NATTÉ | SOLIDS & STRIPES |
|------------------------------------|----------------------------|--|-------|------------------|
| COMPOSITION | | 100% Sunbrella® acrylic | | |
| FINISH | | Non PFAS, Water-Repellent & Stain-Proof | | |
| MINIMUM USEFUL WIDTH | EN 1773 | 140 | 140 | 137 |
| WEIGHT | ISO 3801 g/sqm | 208 | 290 | 260 |
| ROLL LENGTH | LM | 50 | 50 | 50 |
| SPRAY TEST | ISO 4920 Class/5 | | 5 | |
| COLOUR FASTNESS UV INDOOR | ISO 105 B02 Class/8 | | 8 | |
| COLOUR FASTNESS TO WEATHER OUTDOOR | ISO 105 B04 1000 h Class/5 | | 4-5 | |
| FLAME RETARDANCY | | All these fabrics pass the following certifications: BS 5852-1 source 0, Cal 117, NFPA 260, EN 1021-1 (cigarette test) | | |
| CARE INSTRUCTIONS | | Ironing reinforces the treatment | | |

All the values have a +/-5% tolerance



Also available on special order with a flame-retardant backing that passes the following certifications: BS 5852-1 source 1, EN 1021-2 (match test), IMO FTP code part 8. Special order of 200 lm minimum per construction (with a possibility of mixing up to 4 colours). Increases fabric weight by 175 g/m².



Also available on special order with a waterproof backing that brings a waterproofness >1500 mm according to the schmerber test. Special order of 200 lm minimum per construction (with a possibility of mixing up to 4 colours). Increases fabric weight by 100 g/m².

Find more technical information with the digital data sheets !

NATTÉ



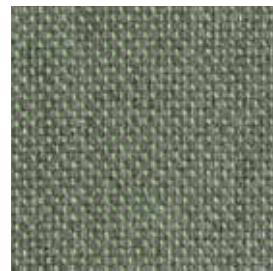
OPTIONAL FINISHES* :



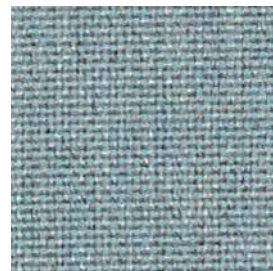
POSEDONIA
NAT 10111 140 **NEW**



BAMBOO
NAT 10112 140 **NEW**



AGAVE
NAT P097 140 **NEW**



FROSTY CHINÉ
NAT 10025 140



CARBON SKY
NAT 10064 140



CARBON BEIGE
NAT 10065 140



NATURE GREY
NAT 10040 140



NAXOS
NAT 10255 140 **NEW**



BLUESTONE
NAT 10083 140 **NEW**



COSMOS
NAT P094 140 **NEW**



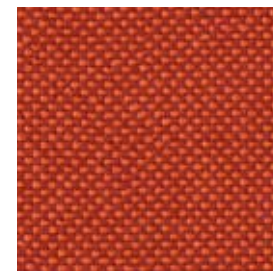
CHESTNUT
NAT 10102 140 **NEW**



TONKA
NAT 10101 140



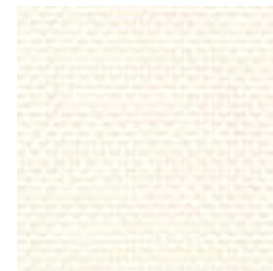
POMPEI
NAT 10256 140 **NEW**



SPRITZ
NAT 10254 140 **NEW**



JASPE
NAT P100 140 **NEW**



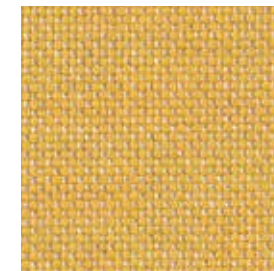
WHITE
NAT 10020 140



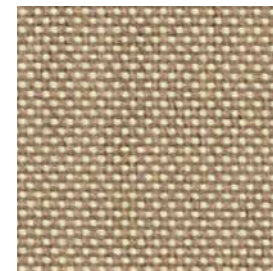
NATURE
NAT 10014 140



CANVAS
NAT 10021 140



SUNLIGHT
NAT 10250 140 **NEW**



HEATHER BEIGE
NAT 10028 140



HEATHER GREY
NAT 10029 140



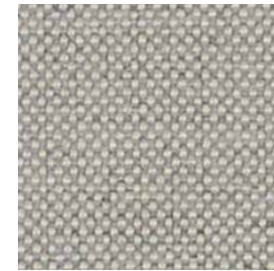
HEATHER CHALK
NAT 10150 140



LINEN CHALK
NAT 10151 140



GREY CHINÉ
NAT 10022 140



GRAUMEL CHALK
NAT 10152 140



TAUPE CHALK
NAT 10155 140



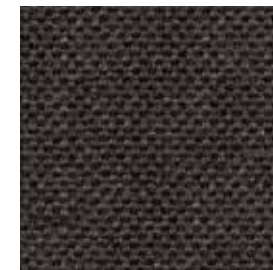
ANTIQUÉ
NAT 5077 140 **NEW**



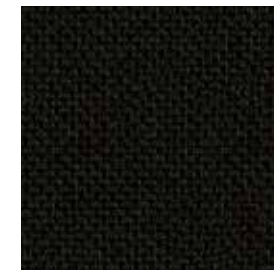
CHARCOAL CHINÉ
NAT 10063 140



DARK TAUPE
NAT 10059 140



SOOTY
NAT 10030 140



MASCARA
NAT 10078 140 **NEW**

* See the characteristics on the technical page

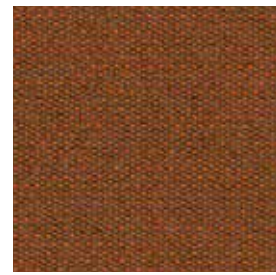
SOLIDS



OPTIONAL FINISHES* :



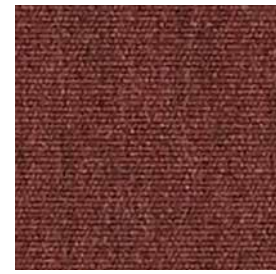
MERLOT
SJA 3997 137 **NEW**



WALNUT
SJA 3996 137 **NEW**



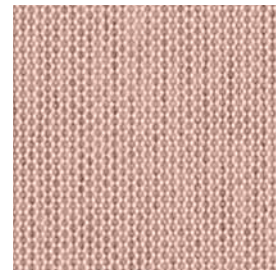
EBENE
SJA P091 137 **NEW**



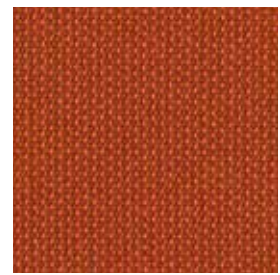
AUTUMN
SJA 3982 137



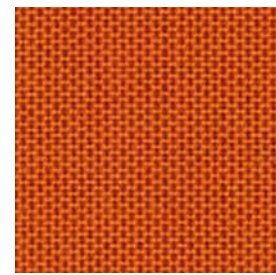
BURGUNDY
SJA 5436 137



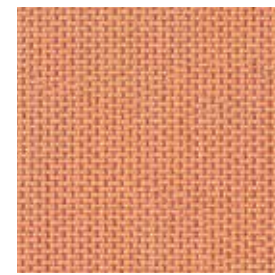
BLUSH
SJA 3965 137



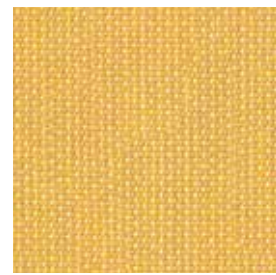
ANTELOPE
SJA P107 137 **NEW**



PUMPKIN
SJA 3968 137



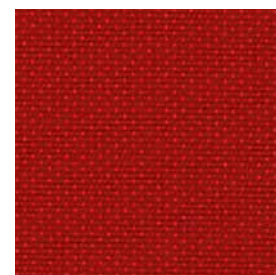
CORAL
SJA P101 137 **NEW**



HIVE
SJA 4000 137 **NEW**



LOGO RED
SJA 5477 137



PEPPER
SJA 3968 137



PARIS RED
SJA 3728 137



MINK BROWN
SJA 3127 137



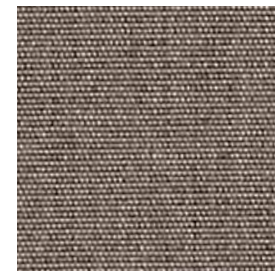
ANTIQUE BEIGE
SJA 5422 137



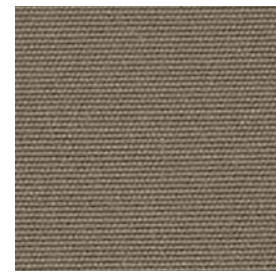
HEATHER BEIGE
SJA 5476 137



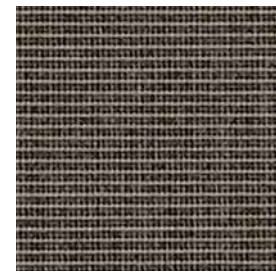
TRUSH
SJA 3995 137 **NEW**



TAUPE CHINÉ
SJA 3907 137



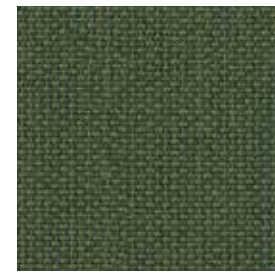
TAUPE
SJA 3729 137



DARK SMOKE
SJA 3792 137



ALMOND
SJA 3983 137



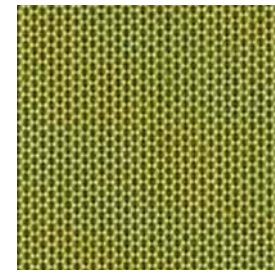
CALATHEA
SJA 3999 137 **NEW**



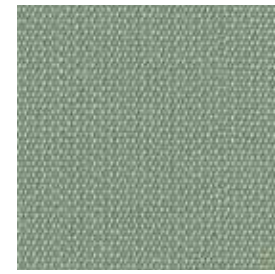
PINEA
SJA 3998 137 **NEW**



MACAO
SJA 3738 137



LICHEN
SJA 3970 137



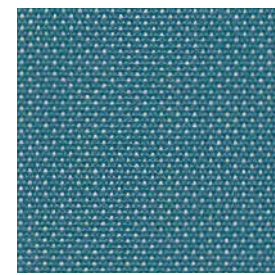
CELADON
SJA P103 137 **NEW**



COMO
SJA P089 137 **NEW**



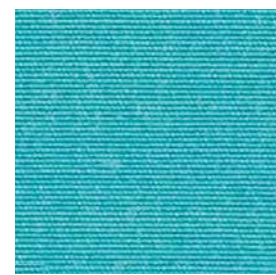
BELHARRA
SJA P105 137 **NEW**



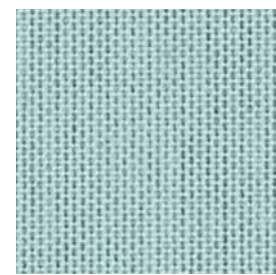
ADRIATIC
SJA 3941 137



TRUE BLUE
SJA 5499 137



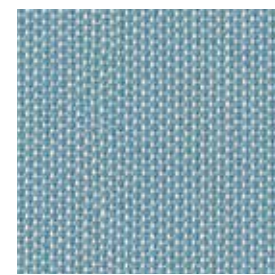
ARUBA
SJA 5416 137



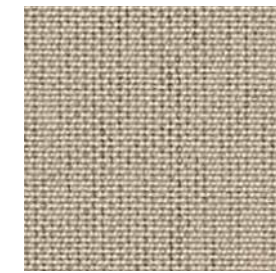
CURACAO
SJA 3964 137



MINERAL BLUE CHINÉ
SJA 3793 137



FJORD
SJA P093 137 **NEW**



PAPYRUS
SJA P055 137 **NEW**



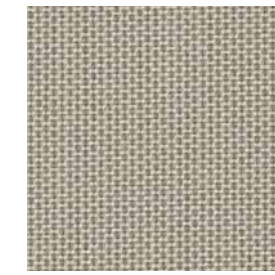
NATURAL
SJA 5404 137



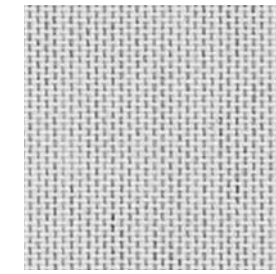
CANVAS
SJA 5453 137



LIN
SJA 3780 137



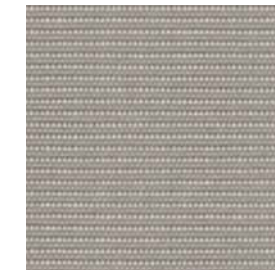
STONE
SJA 3988 137



MARBLE
SJA 3966 137



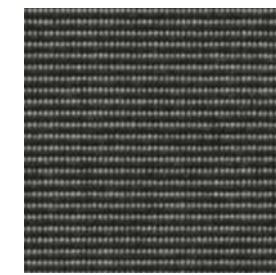
SILVER GREY
SJA 3741 137



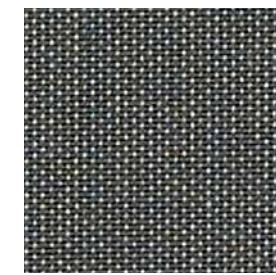
SHINGLES
SJA 3706 137



LEAD CHINÉ
SJA 3756 137



CHARCOAL
SJA 3705 137



TITANIUM
SJA P054 137 **NEW**



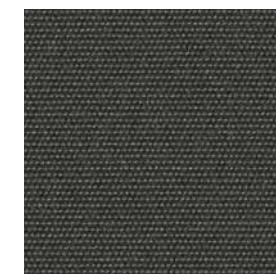
ARDOISE
SJA 3737 137



FLANELLE
SJA 3757 137



MISTRAL
SJA P104 137 **NEW**



CARBON
SJA 3906 137



SOOTY
SJA 3758 137



BLACK
SJA 5408 137

* See the characteristics on the technical page

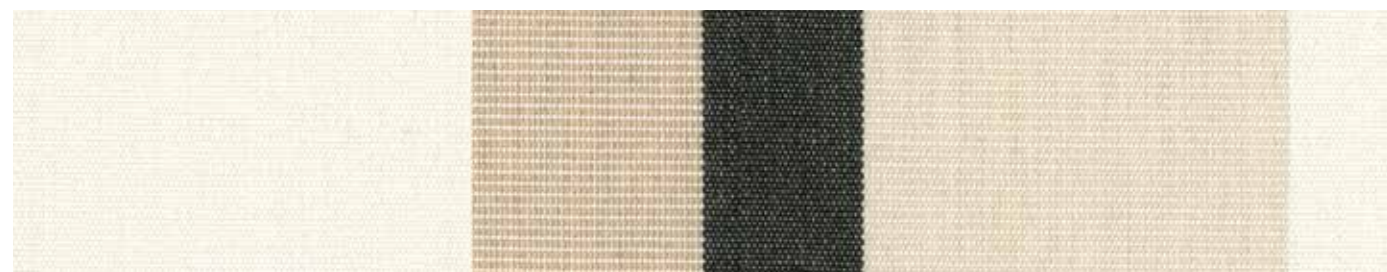
STRIPES

NEW

REPEAT:
45,4 cm



OPTIONAL FINISHES* :



CANYON VERDON
SJA 4002 137



CANYON COLCA
SJA 4003 137



CANYON TENAYA
SJA 4004 137

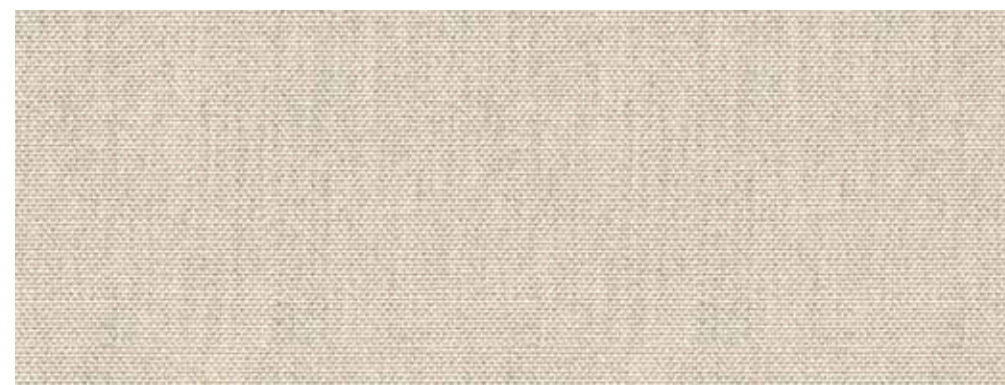
* See the characteristics on the technical page

CLIFF

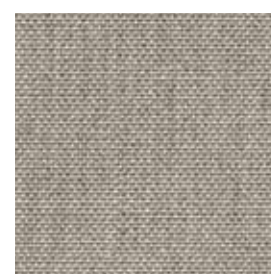
NEW



OPTIONAL FINISHES* :



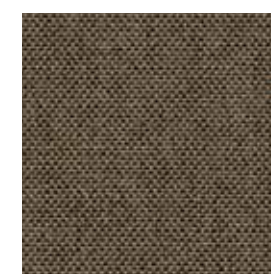
OBVIOUS
CLI B123 140



CLOUD
CLI B125 140



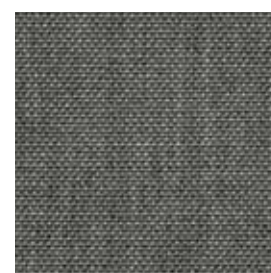
MIST
CLI B124 140



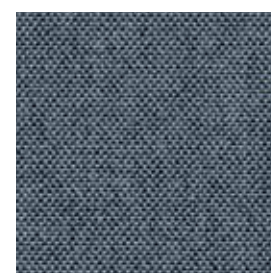
JACKET
CLI B128 140



PETRA
CLI B129 140



SLATE
CLI B126 140



DENIM
CLI B127 140



FIR
CLI B131 140



SPA
CLI B130 140

* See the characteristics on the technical page

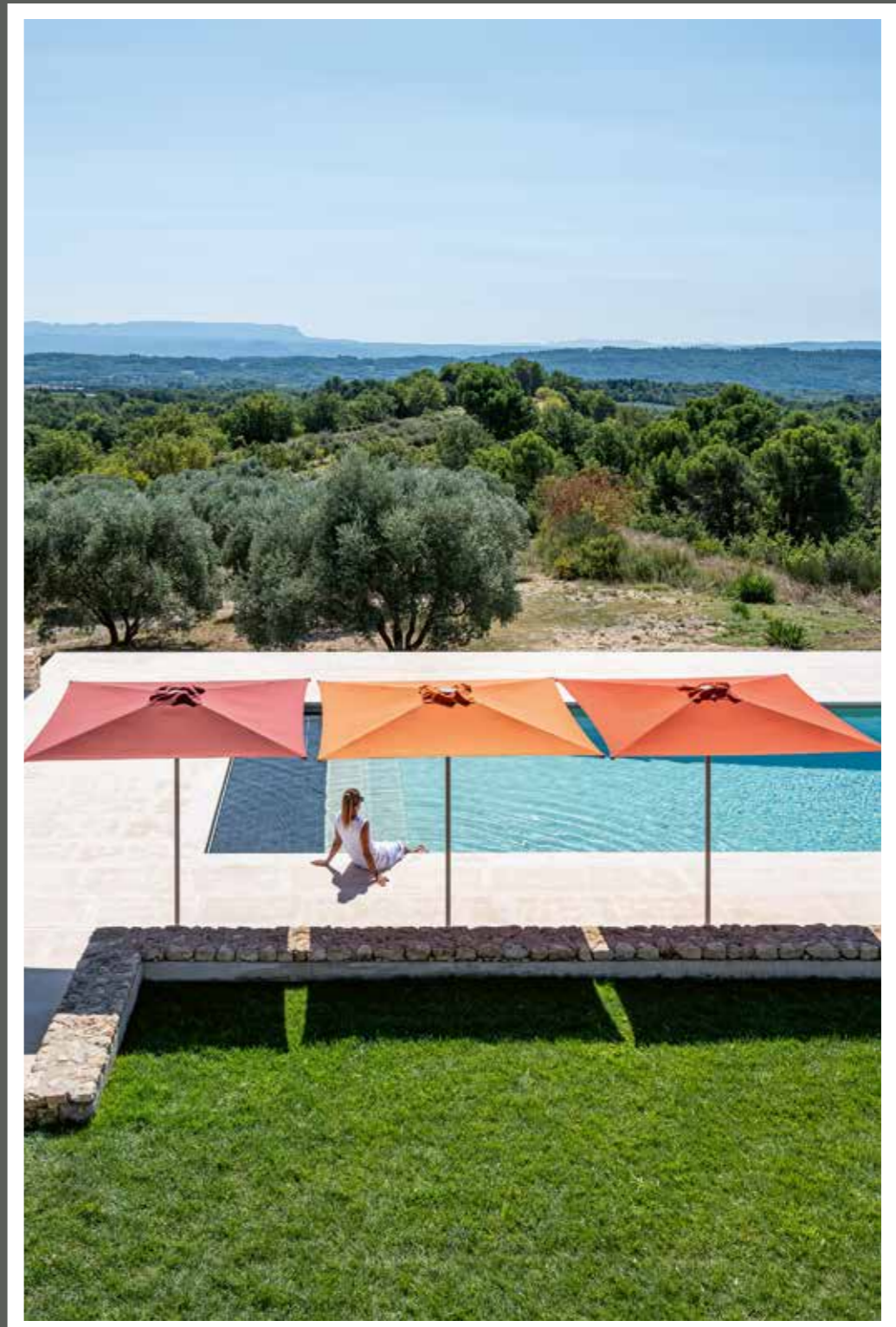


FROM TOP TO BOTTOM: CLIFF MIST B124, SOLID ANTELOPE P107, CLIFF JACKET B128, CLIFF OBVIOUS B123, NATTÉ SOOTY 10030, SOLID WALNUT 3996

* See the characteristics on the technical page



FROM TOP TO BOTTOM AND LEFT TO RIGHT: SOLID BLUSH 3965, SOLID PUMPKIN 3969, TUNDRA SOUK J474, TUNDRA RYE J480, WANDER EVEREST J623, SOLID CORAL P101



FROM LEFT TO RIGHT: SOLID AUTOMNE 3982, SOLID CORAL P101, SOLID PUMPKIN 3969



FROM TOP TO BOTTOM AND LEFT TO RIGHT: CARAT GRENAT J637, KHAIMA KALAHARI J499, SOLID WALNUT 3996, LOPI CHAI R080, TERRITORY ALUM J643, STRIPE CANYON VERDON 4002, SOLID WALNUT 3996, LOPI FAWN R081



CLIFF OBVIOUS B123



FROM TOP TO BOTTOM AND LEFT TO RIGHT: KHAIMA MORINGA J498, LOPI BARIBAL R084, SLOW FOREST 19104, STRIPE CANYON COLCA 4003, SOLID CALATHEA 3999



STRIPE CANYON COLCA 4003



sunbrella.eu ↗

